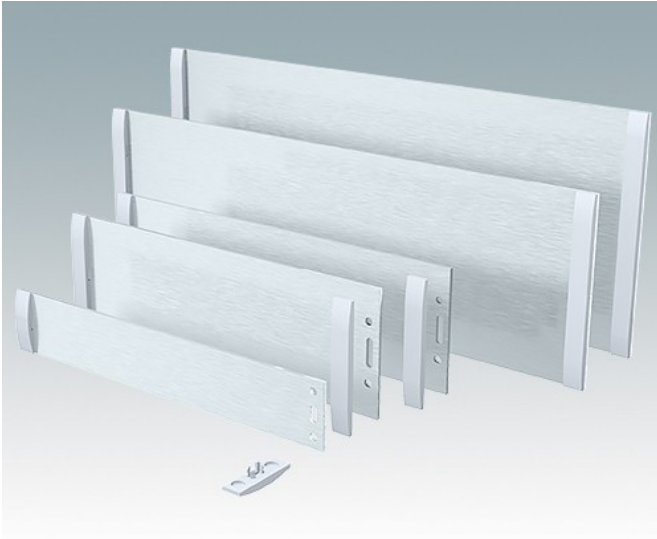
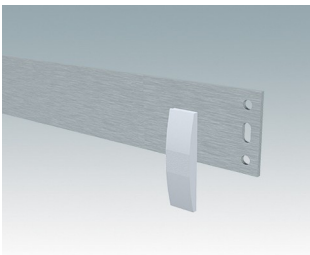


- Frontplatten-Sets aus eloxiertem Aluminium für Unimet-/Unimet-Plus-Gehäuse.
- In kundenspezifischen Ausführungen mit Löchern und Digitaldruck lieferbar
- Ersatz-Abdeckstreifen
- Frontplatten und Abdeckstreifen

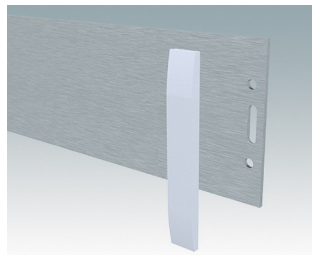
**Bestellen Sie Ihre eigene kundenspezifische Version. [Hier erfahren Sie mehr >>](#)**



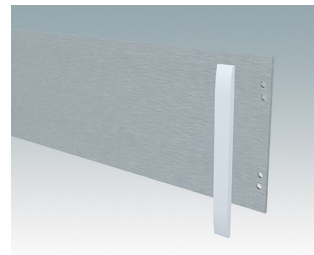
## Versionen



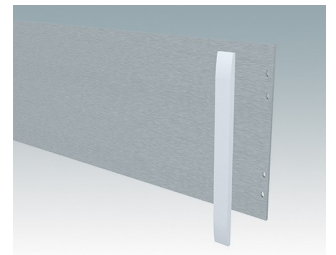
**M5700020**  
Abdeckstreifen 1/1H/1HE  
ABS (UL 94 HB)  
Lichtgrau RAL 7035



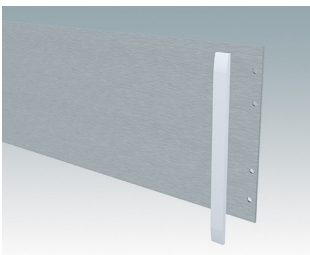
**M5700021**  
Abdeckstreifen 2/2H/3/3H/2HE  
ABS (UL 94 HB)  
Lichtgrau RAL 7035



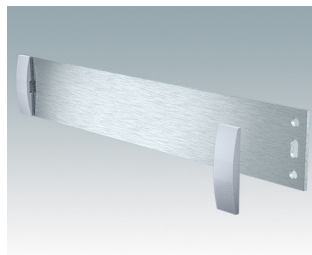
**M5700022**  
Abdeckstreifen 4/4H  
ABS (UL 94 HB)  
Lichtgrau RAL 7035



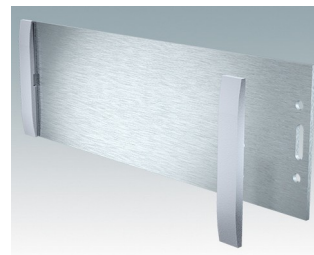
**M5700023**  
Abdeckstreifen 3HE  
ABS (UL 94 HB)  
Lichtgrau RAL 7035



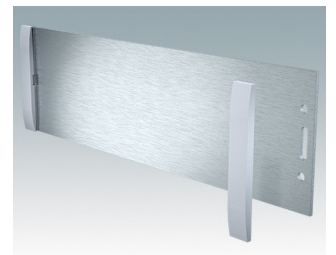
**M5700024**  
Abdeckstreifen 5/5H/6/6H  
ABS (UL 94 HB)  
Lichtgrau RAL 7035



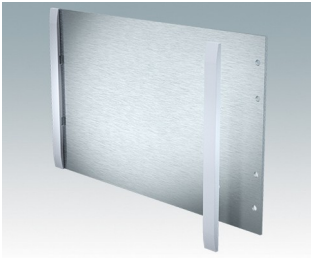
**M5700607**  
Frontplatten-Set (1/1H)  
Aluminium  
Matt eloxiert  
199,5x2x33,6mm



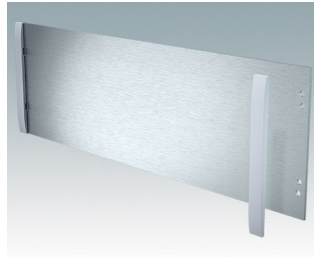
**M5700608**  
Frontplatten-Set (2/2H)  
Aluminium  
Matt eloxiert  
199,5x2x65,1mm



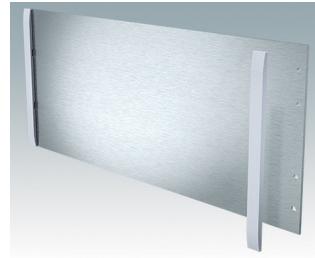
**M5700613**  
Frontplatten-Set (3/3H)  
Aluminium  
Matt eloxiert  
219,5x2x65,1mm



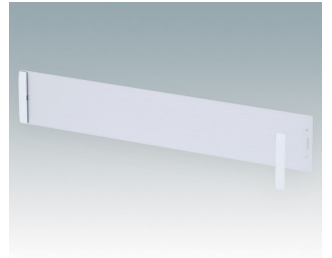
**M5700616**  
Frontplatten-Set (5/5H)  
Aluminium  
Matt eloxiert  
219,5x2x130,1mm



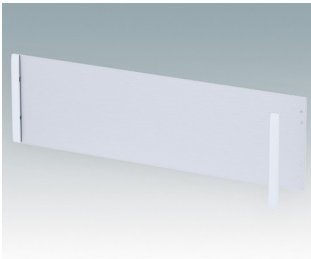
**M5700620**  
Frontplatten-Set (4/4H)  
Aluminium  
Matt eloxiert  
319,5x2x100,1mm



**M5700621**  
Frontplatten-Set (6/6H)  
Aluminium  
Matt eloxiert  
319,5x2x130,1mm



**M5900020**  
Frontplatten-Set (2HE)  
Aluminium  
Matt eloxiert  
392,5x2x67,1mm



**M5900030**  
Frontplatten-Set (3HE)  
Aluminium  
Matt eloxiert  
392,5x2x111mm

Technische Änderungen vorbehalten. © OKW Enclosures Ltd